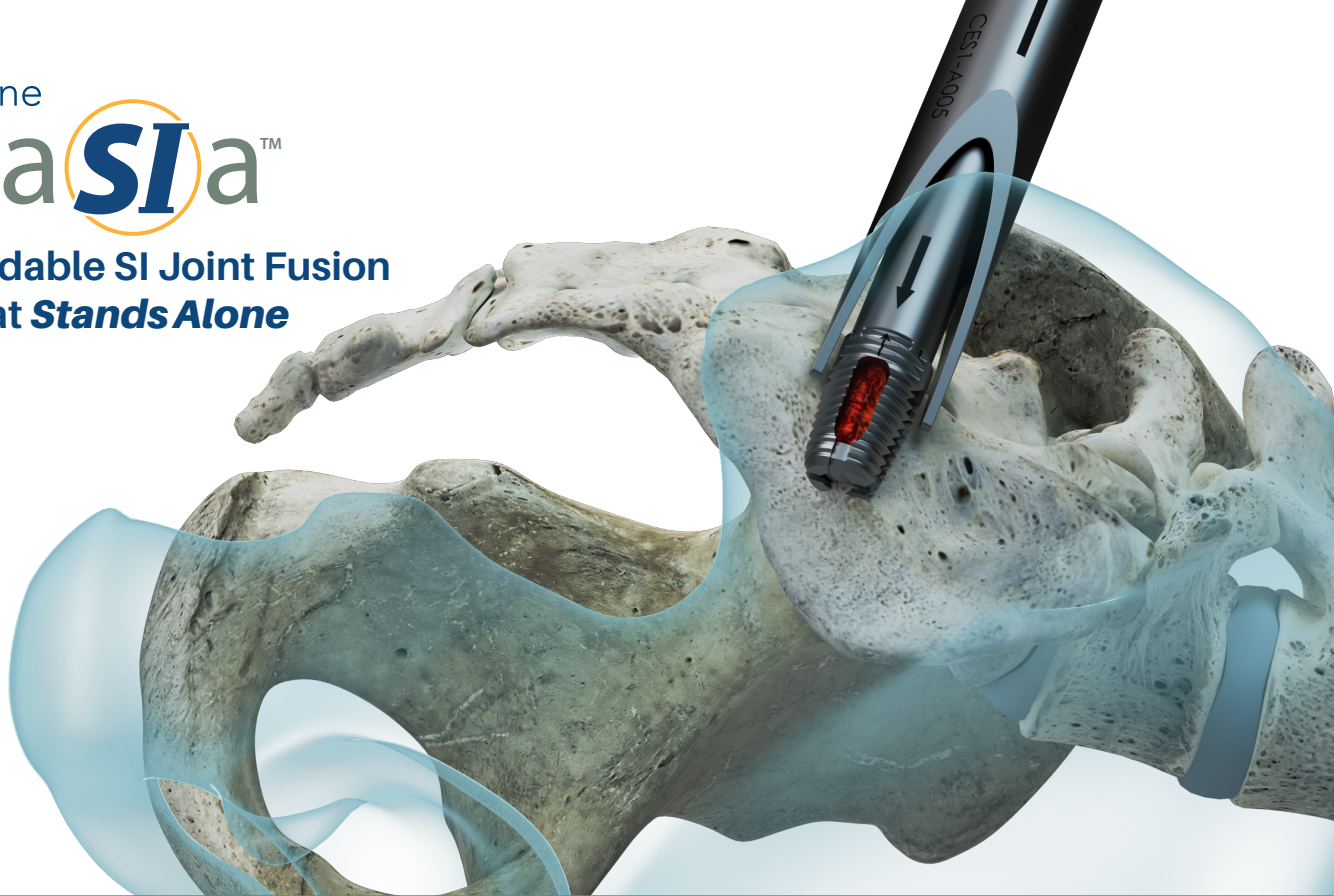




The Expandable SI Joint Fusion
System that ***Stands Alone***



The panaSla Difference

True Zero-Profile Posterior Device; No Anchor Screws

Single Device Placement from a Posterior Approach

Expands 2mm radially

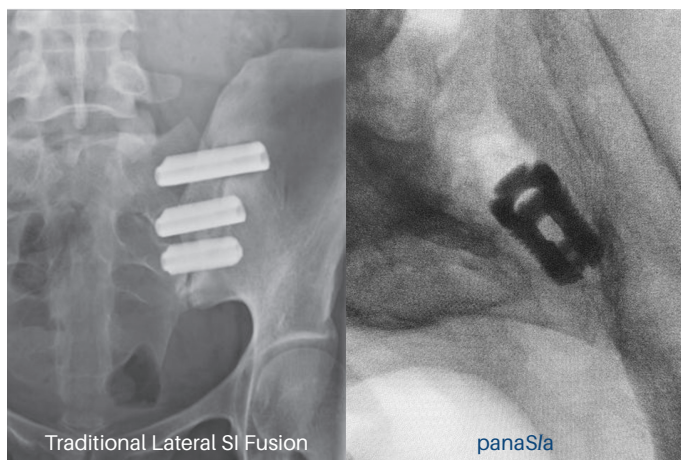
Device Expands into a Block Shape *In Situ* Piercing Bone

Provides immediate stabilization of the SI Joint

Non-Impact MIS Insertion Technique

Generous Graft Chamber Filled Post-Expansion

Cleared for Use with Autograft and/or Allograft



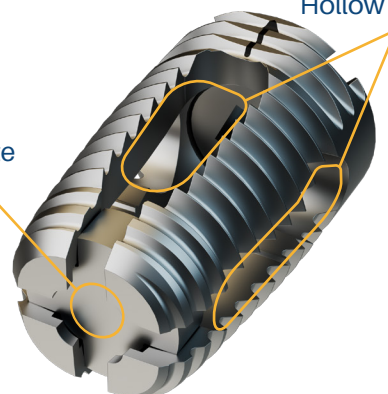
Traditional Lateral SI Fusion

panaSla

The Simplicity is in the Imaging

Self-Locking
Expansion Plate

Large Fenestrations &
Hollow Graft Chamber



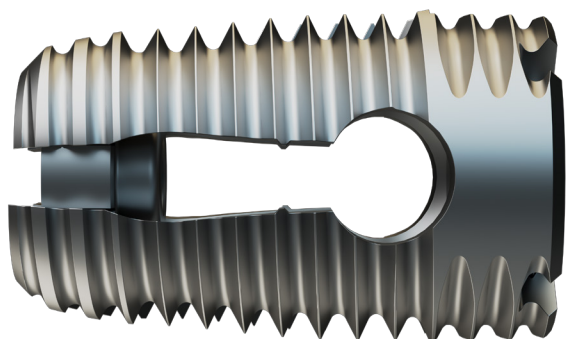
panaSla has a unique FDA Clearance and Stands Alone as the only Expandable SI Fusion System on the Market

panaSla is the only posterior expandable Sacroiliac fusion system cleared for use to treat the symptoms of the SI Joint. With a smart and simple approach, individually sterile-packed implants, and a single instrument tray, we offer a surgical solution desirable for hospitals and outpatient ASC facilities.

WWW.WENZELSPINE.COM

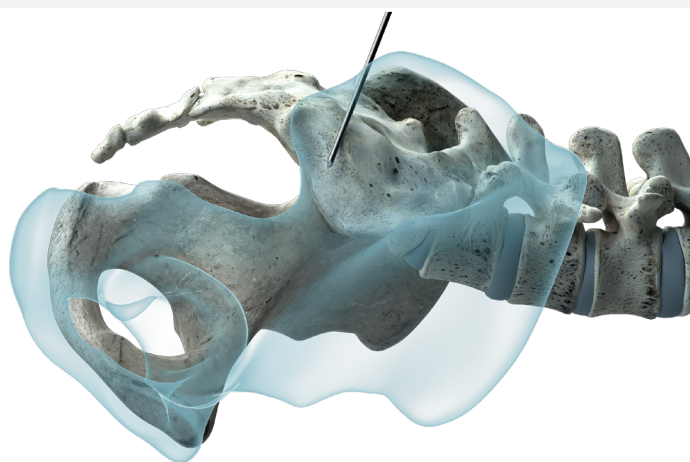
Non-Impact Insertion and Multi-Plane Expansion *In Situ*

panaSIa is designed to enter the sacroiliac joint and expand into a fixed block shape. Once in situ, the device pierces the cortical bone to gain additional purchase to stabilize the SI Joint.



Generous Graft Chamber

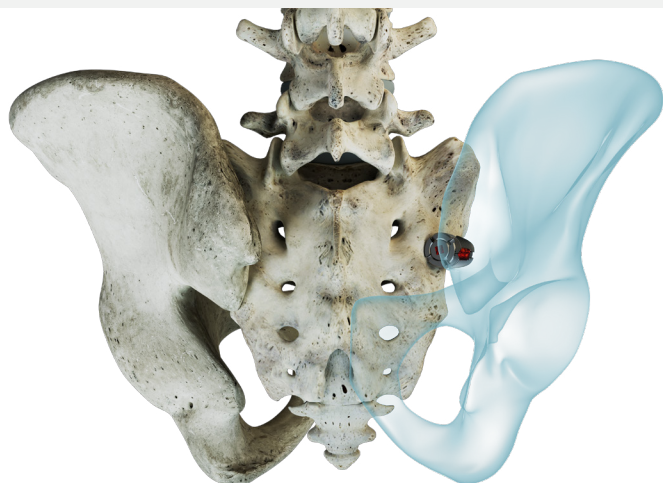
With four large fenestrations and a generous bone graft chamber, the panaSIa device is designed to allow maximum contact between bone graft and bony surfaces to promote fusion of the SI Joint.



Safety and Fusion Profile

Dorsal approach avoids critical vascular and neural anatomy. Expanded panaSIa implant offers a large implant to bone interface for immediate fixation and bony in-growth.

Data on file with Wenzel Spine.



Ready to learn more?

Let's start the conversation.

1-855-WENZEL1

WWW.WENZELSPINE.COM

wenzel spine